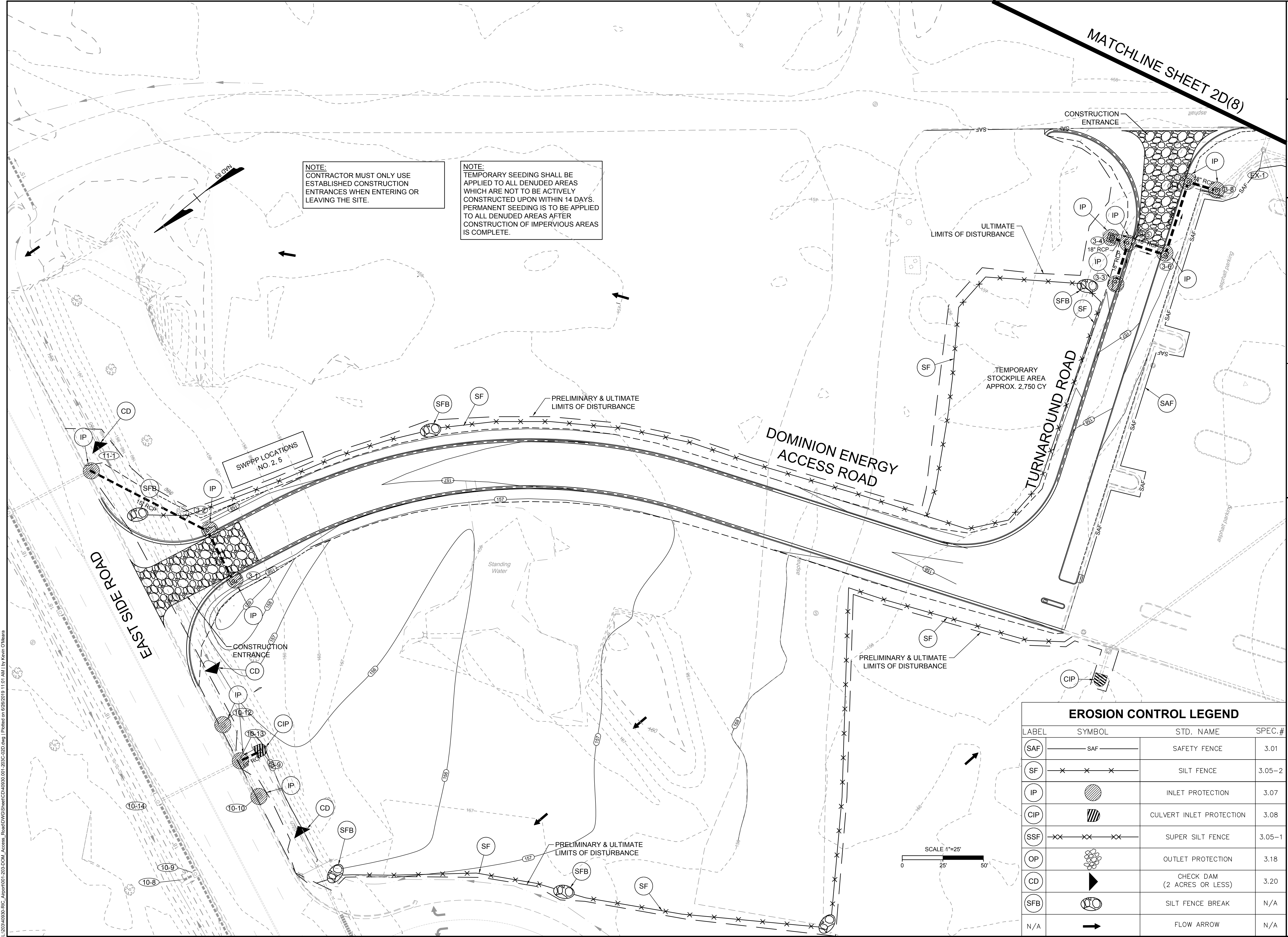


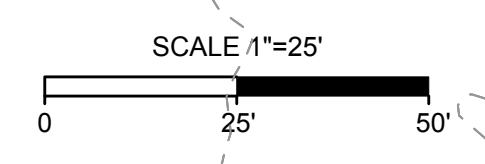
MATCHLINE SHEET 2D(8)

NOTE:
CONTRACTOR MUST ONLY USE
ESTABLISHED CONSTRUCTION
ENTRANCES WHEN ENTERING OR
LEAVING THE SITE.

NOTE:
TEMPORARY SEEDING SHALL BE
APPLIED TO ALL DENUED AREAS
WHICH ARE NOT TO BE ACTIVELY
CONSTRUCTED UPON WITHIN 14 DAYS.
PERMANENT SEEDING IS TO BE APPLIED
TO ALL DENUED AREAS AFTER
CONSTRUCTION OF IMPERVIOUS AREAS
IS COMPLETE.



EROSION CONTROL LEGEND			
LABEL	SYMBOL	STD. NAME	SPEC.#
SAF	— SAF —	SAFETY FENCE	3.01
SF	× × ×	SILT FENCE	3.05-2
IP	▨	INLET PROTECTION	3.07
CIP	▨	CULVERT INLET PROTECTION	3.08
SSF	×× ×× ××	SUPER SILT FENCE	3.05-1
OP	⊗	OUTLET PROTECTION	3.18
CD	▴	CHECK DAM (2 ACRES OR LESS)	3.20
SFB	⊗	SILT FENCE BREAK	N/A
N/A	→	FLOW ARROW	N/A



YOUR VISION ACHIEVED THROUGH OURS.

THIS DRAWING PREPARED AT THE
OFFICE OF
1001 Boulder Park
TEL 804.200.6500 FAX 804.560.016 www.timmons.com

DATE	REVISION DESCRIPTION
6/30/2019	

DRAWN BY: KPO
DESIGNED BY: KPO
CHECKED BY: CMK
SCALE: 1"=25'

TIMMONS GROUP

Site Development | Residential | Infrastructure | Technology

EAST RAMP 3 ACCESS ROAD
HENRICO COUNTY - VIRGINIA

PHASE II EROSION & SEDIMENT CONTROL PLAN

JOB NO. 40930.001
SHEET NO. 02D(07)

These plans and associated documents are the exclusive property of TIMMONS GROUP and may not be reproduced in whole or in part and shall not be used for any purpose whatsoever, inclusive, but not limited to construction, bidding, and/or construction staking without the express written consent of TIMMONS GROUP.

I:\2019\40930-ERIC_Alpert\001-203-DDM_Access_Road\DWG\Sheet\CD\40930_001-203C-02D.dwg | Printed on 6/26/2019 11:07 AM | by Kevin O'Meara