



DATE	REVISION DESCRIPTION
9/3/2019 <td></td>	

DATE	DRAWN BY	DESIGNED BY	CHECKED BY	SCALE
9/3/2019	KPO	KPO	CMK	1"=25'

YOUR VISION ACHIEVED THROUGH OURS.

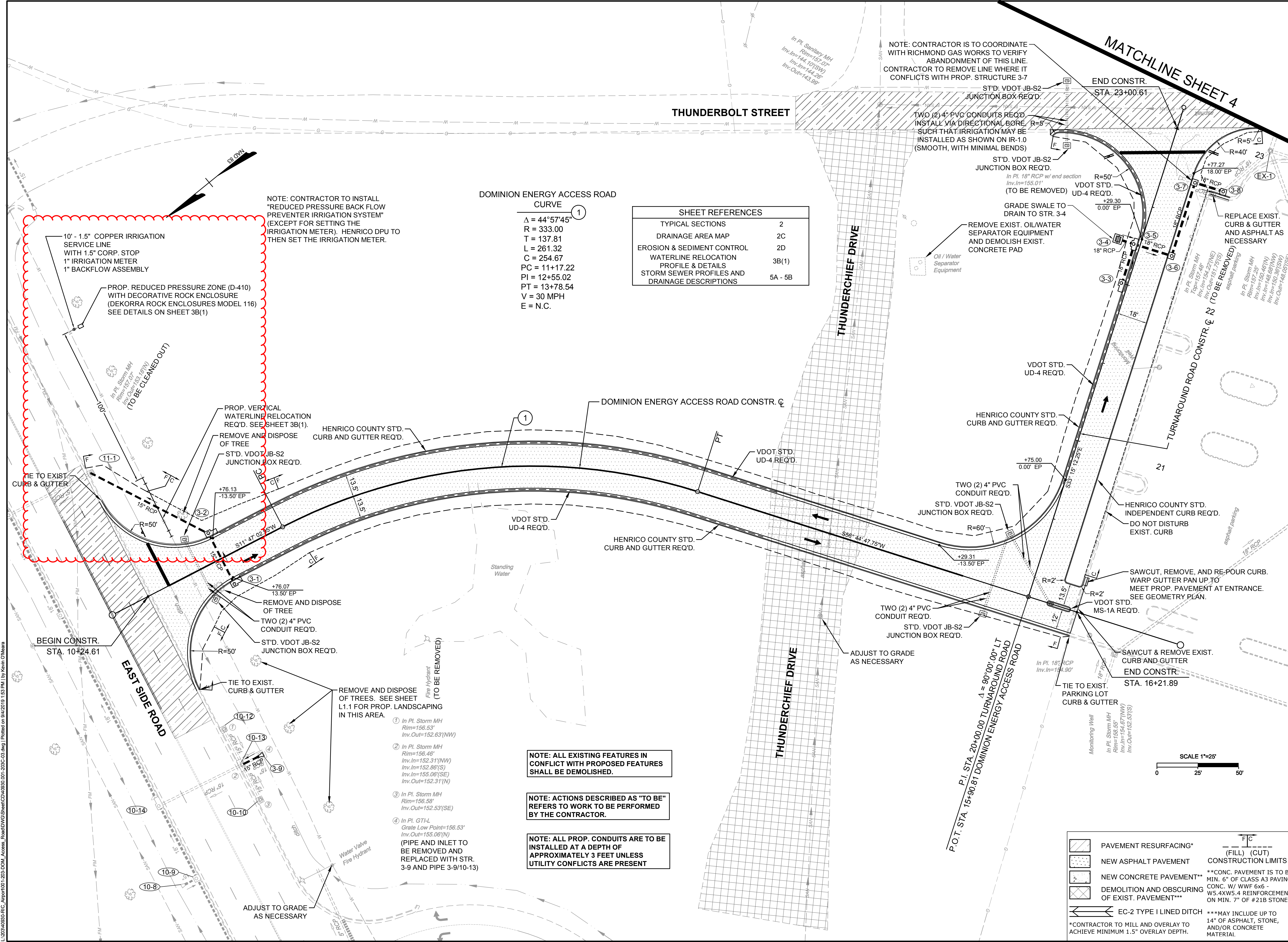
THIS DRAWING PREPARED AT THE
CORPORATE OFFICE
1001 Boulevard Parkway, Richmond, VA 23225
TEL 804.200.6500 FAX 804.560.0016 www.timmons.com

TIMMONS GROUP

Site Development | Residential | Infrastructure | Technology

EAST RAMP 3 ACCESS ROAD
HENRICO COUNTY - VIRGINIA
PLAN SHEET

JOB NO. 40930.001
SHEET NO. 03



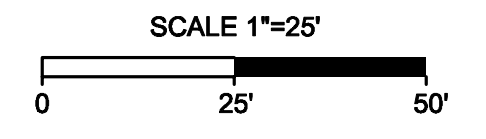
L:\2019\0930-BIC_Alpert\001-203-DOM_Access_Road\DWG\Sheet\CD\0930_001-203C_03.dwg [Plotted on 9/4/2019 1:53 PM] by Kevin O'Meara

DOMINION ENERGY ACCESS ROAD CURVE 1

$\Delta = 44^{\circ}57'45''$
 $R = 333.00$
 $T = 137.81$
 $L = 261.32$
 $C = 254.67$
 $PC = 11+17.22$
 $PI = 12+55.02$
 $PT = 13+78.54$
 $V = 30 \text{ MPH}$
 $E = N.C.$

SHEET REFERENCES	
TYPICAL SECTIONS	2
DRAINAGE AREA MAP	2C
EROSION & SEDIMENT CONTROL	2D
WATERLINE RELOCATION PROFILE & DETAILS	3B(1)
STORM SEWER PROFILES AND DRAINAGE DESCRIPTIONS	5A - 5B

- 1 In Pl. Storm MH
Rim=156.53'
Inv.Out=152.63'(NW)
- 2 In Pl. Storm MH
Rim=156.46'
Inv.In=152.31'(NW)
Inv.In=152.86'(S)
Inv.In=155.06'(SE)
Inv.Out=152.31'(N)
- 3 In Pl. Storm MH
Rim=156.58'
Inv.Out=152.53'(SE)
- 4 In Pl. G+L
Grate Low Point=156.53'
Inv.Out=155.06'(N)
(PIPE AND INLET TO BE REMOVED AND REPLACED WITH STR. 3-9 AND PIPE 3-9/10-13)



	PAVEMENT RESURFACING*		CONSTRUCTION LIMITS (FILL) (CUT)
	NEW ASPHALT PAVEMENT		DEMOLITION AND OBSCURING OF EXIST. PAVEMENT**
	NEW CONCRETE PAVEMENT**		EG-2 TYPE I LINED DITCH