

| | | | |
|--|--|--|--|
| | PAVEMENT RESURFACING* | | CONSTRUCTION LIMITS |
| | NEW ASPHALT PAVEMENT | | (FILL) (CUT) |
| | NEW CONCRETE PAVEMENT** | | **CONC. PAVEMENT IS TO BE MIN. 6" OF CLASS A3 PAVING CONC. W/ WWF 6x6 - W5.4XW5.4 REINFORCEMENT ON MIN. 7" OF #21B STONE |
| | DEMOLITION AND OBSCURING OF EXIST. PAVEMENT*** | | ***MAY INCLUDE UP TO 14" OF ASPHALT, STONE, AND/OR CONCRETE MATERIAL |
| | EC-2 TYPE I LINED DITCH | | |

*CONTRACTOR TO MILL AND OVERLAY TO ACHIEVE MINIMUM 1.5" OVERLAY DEPTH.
 **CONC. PAVEMENT IS TO BE MIN. 6" OF CLASS A3 PAVING CONC. W/ WWF 6x6 - W5.4XW5.4 REINFORCEMENT ON MIN. 7" OF #21B STONE
 ***MAY INCLUDE UP TO 14" OF ASPHALT, STONE, AND/OR CONCRETE MATERIAL

SCALE 1"=25'
 0 25 50

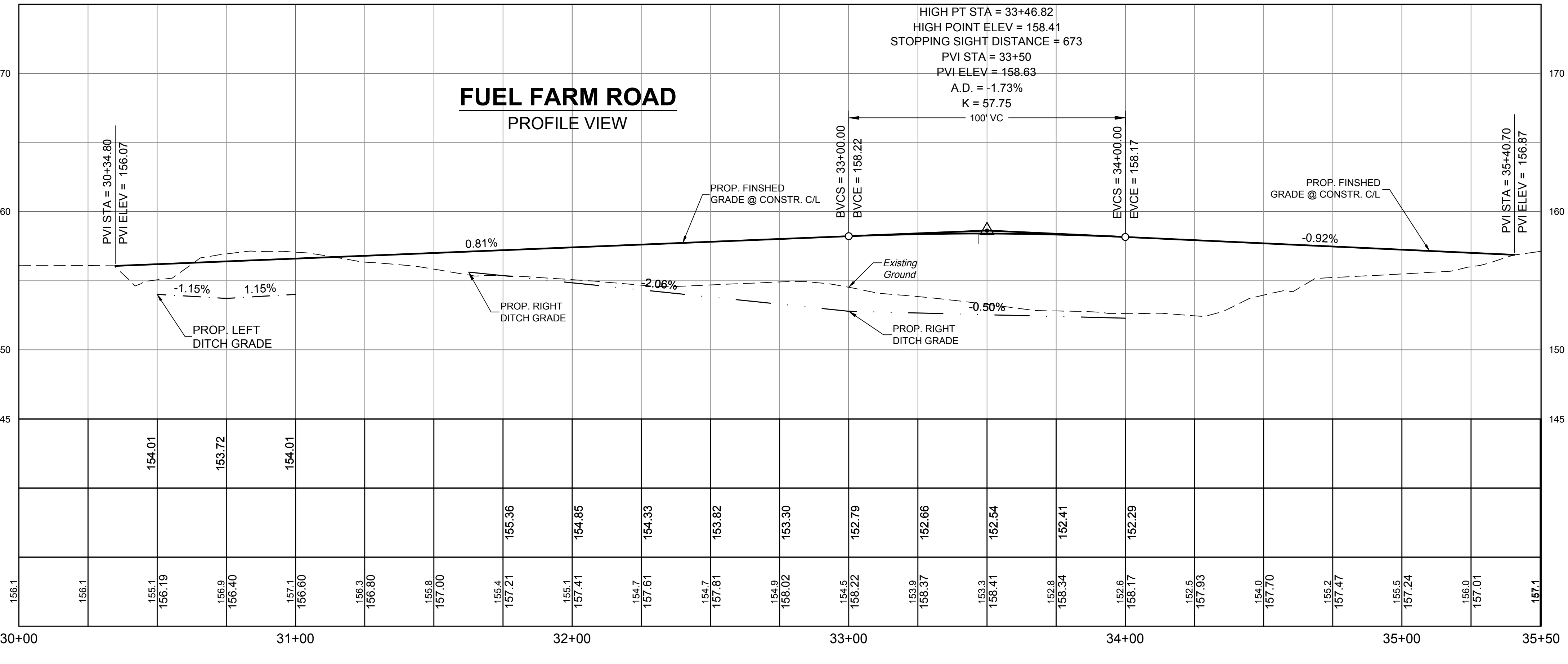
| REVISION DESCRIPTION | DATE |
|----------------------|------|
| | |
| | |
| | |
| | |

YOUR VISION ACHIEVED THROUGH OURS.

THIS DRAWING PREPARED AT THE OFFICE OF
TIMMONS GROUP
 1001 Boulders Parkway, Suite 300, Henrico, VA 23225
 TEL: 804.200.6500 FAX: 804.560.0106 www.timmons.com

| | |
|-------------|-----------|
| DATE | 6/30/2019 |
| DRAWN BY | KPO |
| DESIGNED BY | KPO |
| CHECKED BY | CMK |
| SCALE | 1"=25' |

| SHEET REFERENCES | |
|--|---------|
| TYPICAL SECTIONS | 2 |
| STORM SEWER PROFILES AND DRAINAGE DESCRIPTIONS | 5A - 5B |
| DRAINAGE AREA MAP | 2C |
| EROSION & SEDIMENT CONTROL | 2D |



TIMMONS GROUP

Site Development | Residential | Infrastructure | Technology

EAST RAMP 3 ACCESS ROAD
 HENRICO COUNTY - VIRGINIA
 PLAN AND PROFILE SHEET

JOB NO. 40930.001
 SHEET NO. 04

These plans and associated documents are the exclusive property of TIMMONS GROUP and may not be reproduced in whole or in part and shall not be used for any purpose whatsoever, inclusive, but not limited to construction, bidding, and/or construction safety without the express written consent of TIMMONS GROUP.