

3-1 STD. DI-3B REQ'D. (TYPE B NOSE)
INV. = 153.72', H = 3.05', L = 6'
1 U.D. CONN. REQ'D.
CONTRACTOR SHALL CAST IN-PLACE DUE TO
LESS THAN MIN. HEIGHT

11-1 TIE PROPOSED PIPE 3-2/11-1 INTO EXISTING MANHOLE

3-5 STD. DI-3C REQ'D. (TYPE B NOSE)
INV. = 152.31', H = 4.45', L = 6'
STD. IS-1 REQ'D., 2 U.D. CONN. REQ'D.
STD. ST-1 REQ'D.

3-7 19' - 18" STORM SEWER PIPE REQ'D.
INV.(IN) = 151.90', INV.(OUT) = 151.85'
COVER = 3.75' & VAR.

4-1 66' - 15" CLASS IV STORM SEWER PIPE REQ'D.
INV.(IN) = 153.70', INV.(OUT) = 151.62'
COVER = 0.5' & VAR.

3-2 34' - 15" CLASS IV STORM SEWER PIPE REQ'D.
INV.(IN) = 153.72', INV.(OUT) = 153.62'
COVER = 1' & VAR.

3-3 STD. DI-3B REQ'D. (TYPE B NOSE)
INV. = 152.48', H = 4.35', L = 6'
STD. ST-1 REQ'D., 1 U.D. CONN. REQ'D.

3-5 24' - 18" STORM SEWER PIPE REQ'D.
INV.(IN) = 152.31', INV.(OUT) = 152.24'
COVER = 2.5' & VAR.

3-8 STD. DI-3A REQ'D.
INV. = 151.75', H = 5.73'
STD. ST-1 REQ'D., STD. IS-1 REQ'D.
TIE EXISTING PIPE 3-8/EX-1 INTO STRUCTURE

4-2 STD. DI-7 REQ'D. (GRATE TYPE A I)
INV. = 151.52', H = 2.40'
STD. IS-1 REQ'D.
CONTRACTOR TO GRADE SWALE AS
REQUIRED TO DIRECT DRAINAGE TO INLET

3-2 STD. DI-3B REQ'D. (TYPE B NOSE)
INV. = 153.52', H = 3.25', L = 6'
STD. IS-1 REQ'D., 1 U.D. CONN. REQ'D.
CONTRACTOR SHALL CAST IN-PLACE DUE TO
LESS THAN MIN. HEIGHT

3-3 25' - 18" STORM SEWER PIPE REQ'D.
INV.(IN) = 152.48', INV.(OUT) = 152.41'
COVER = 2.75' & VAR.

3-6 STD. DI-3A REQ'D. (TYPE B NOSE)
INV. = 152.14', H = 5.1'
STD. ST-1 REQ'D., STD. IS-1 REQ'D.

3-9 STD. 15" ES-1 END SECTION REQ'D.
INV. = 154.00'

4-2 EX-5 16' - 15" STORM SEWER PIPE REQ'D.
INV.(IN) = 151.52', INV.(OUT) = 151.47'
COVER = 1.0' & VAR.

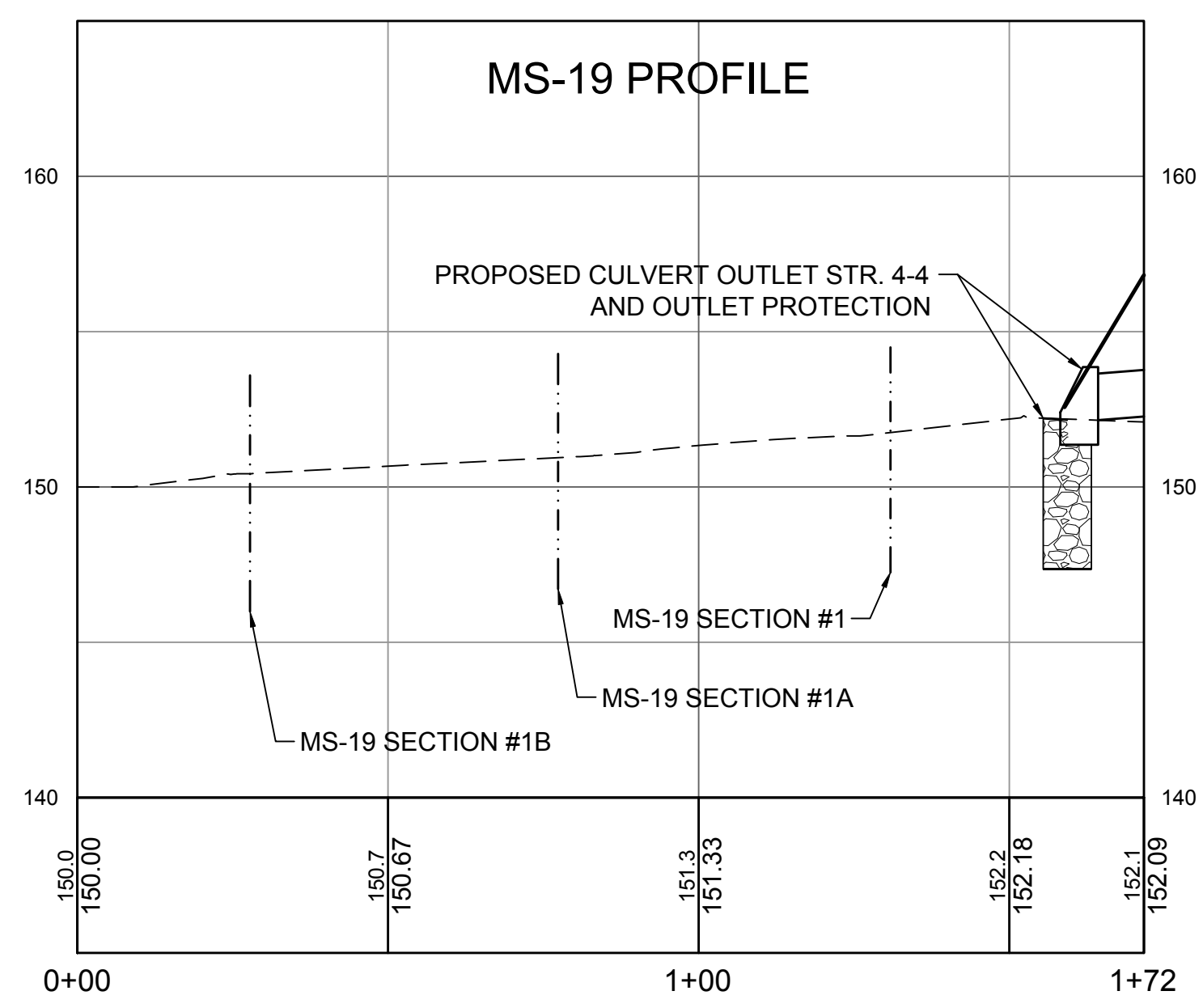
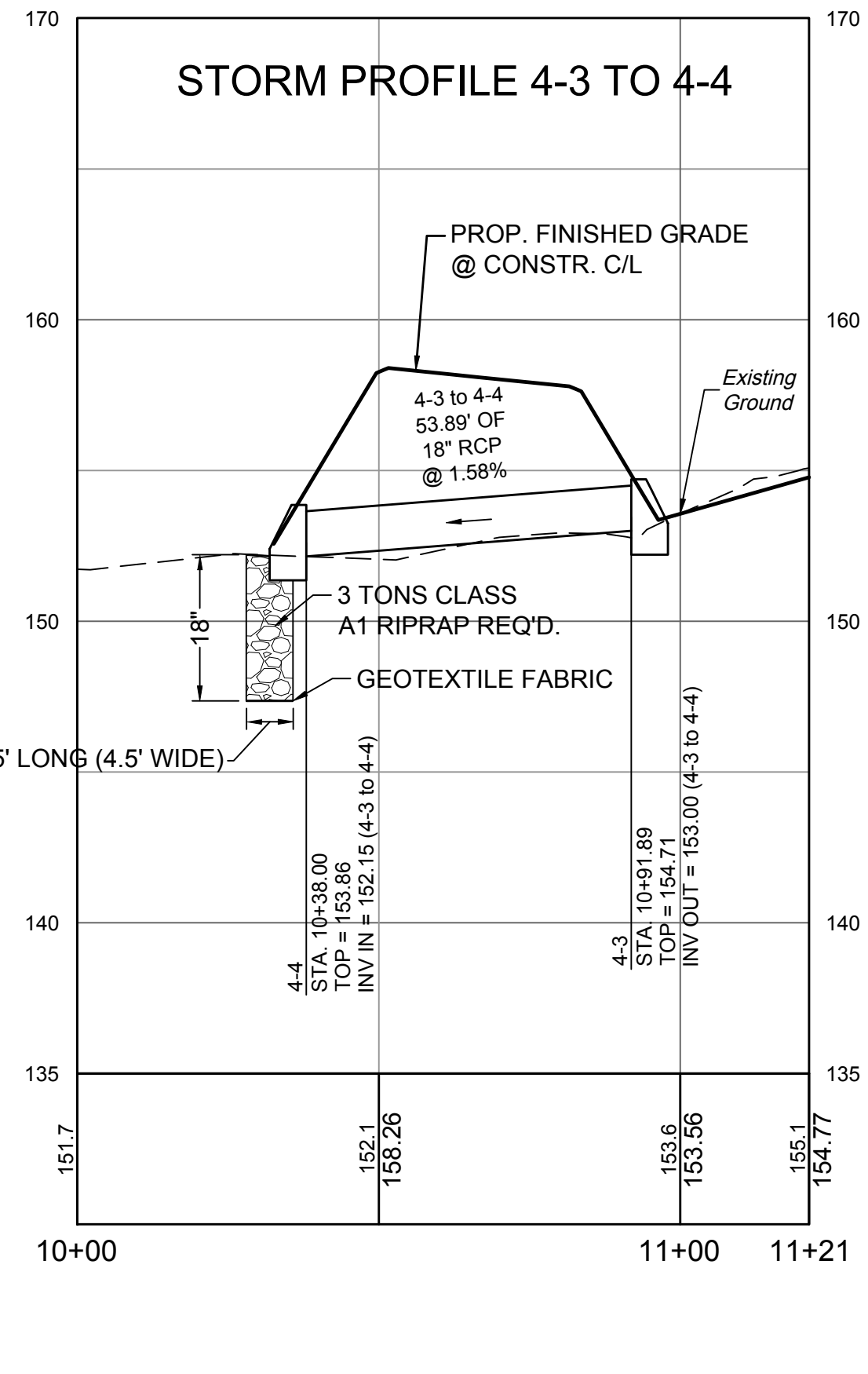
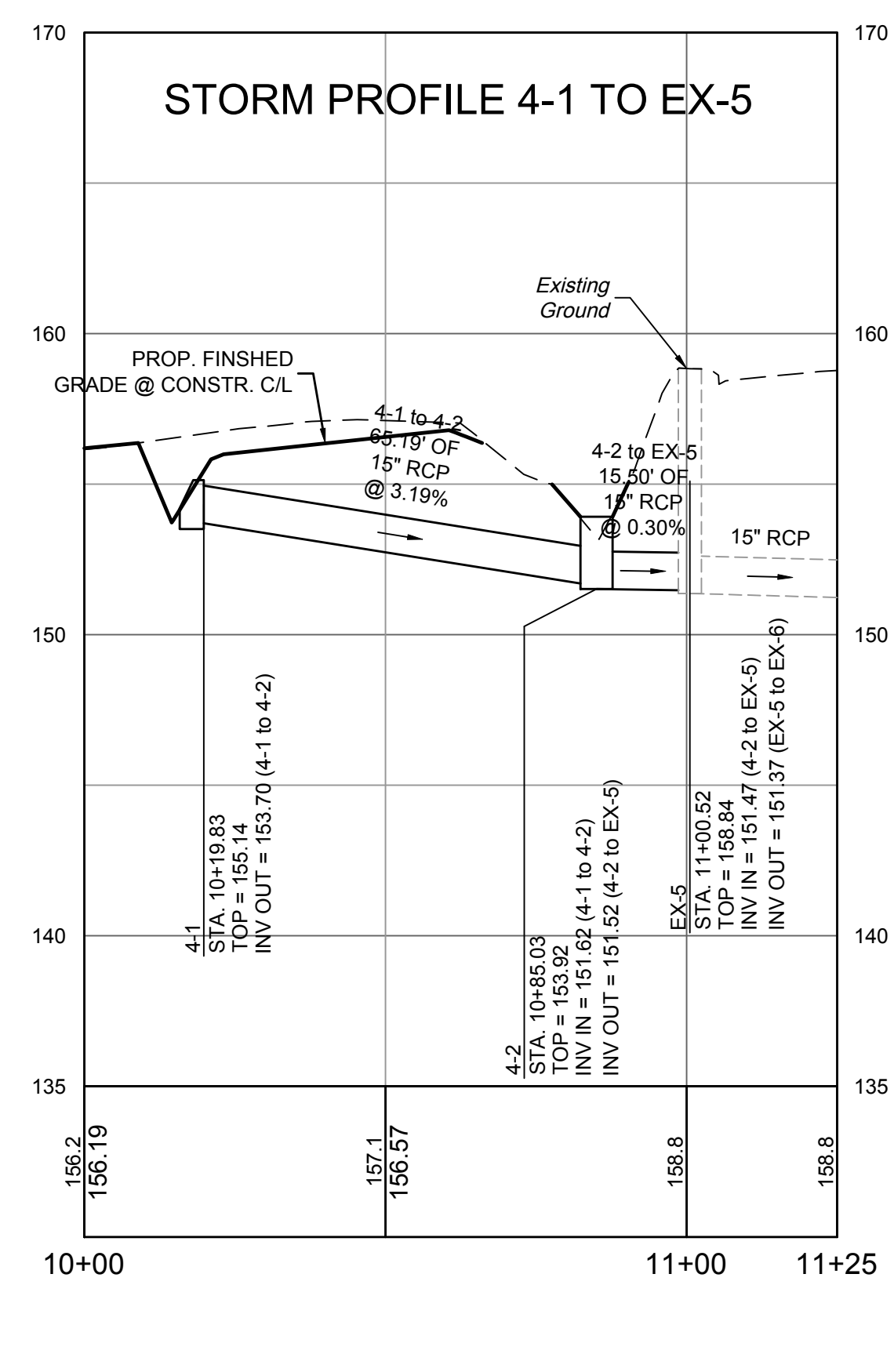
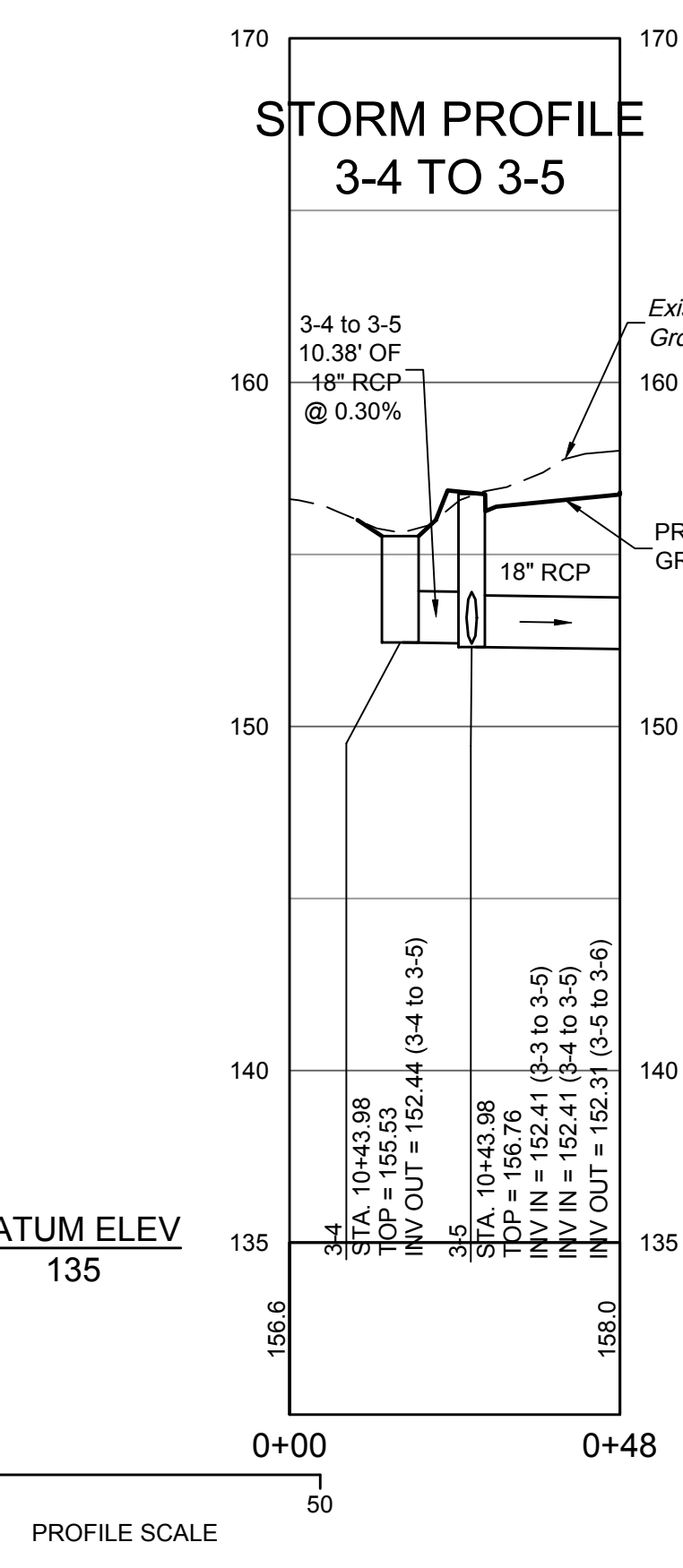
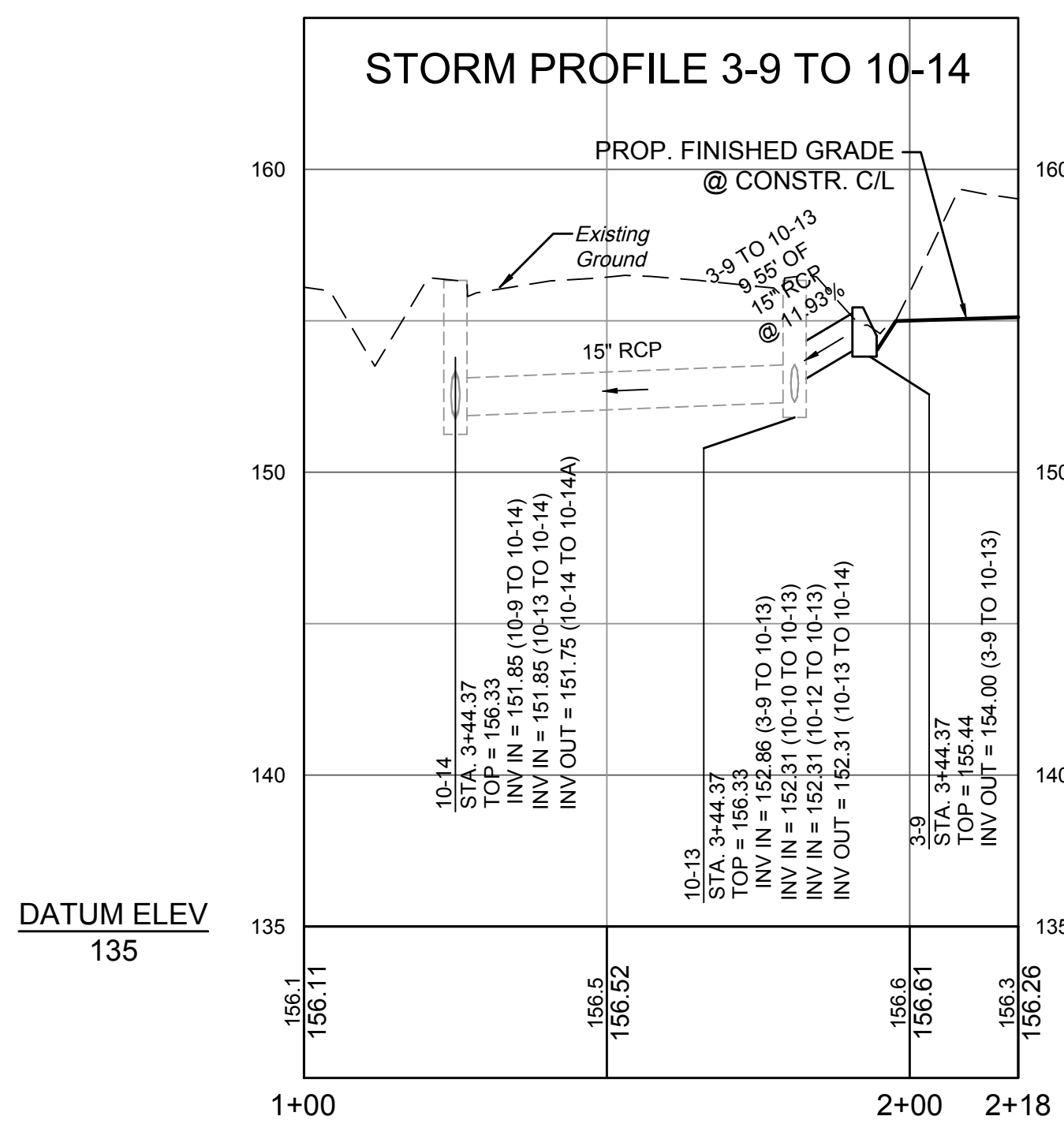
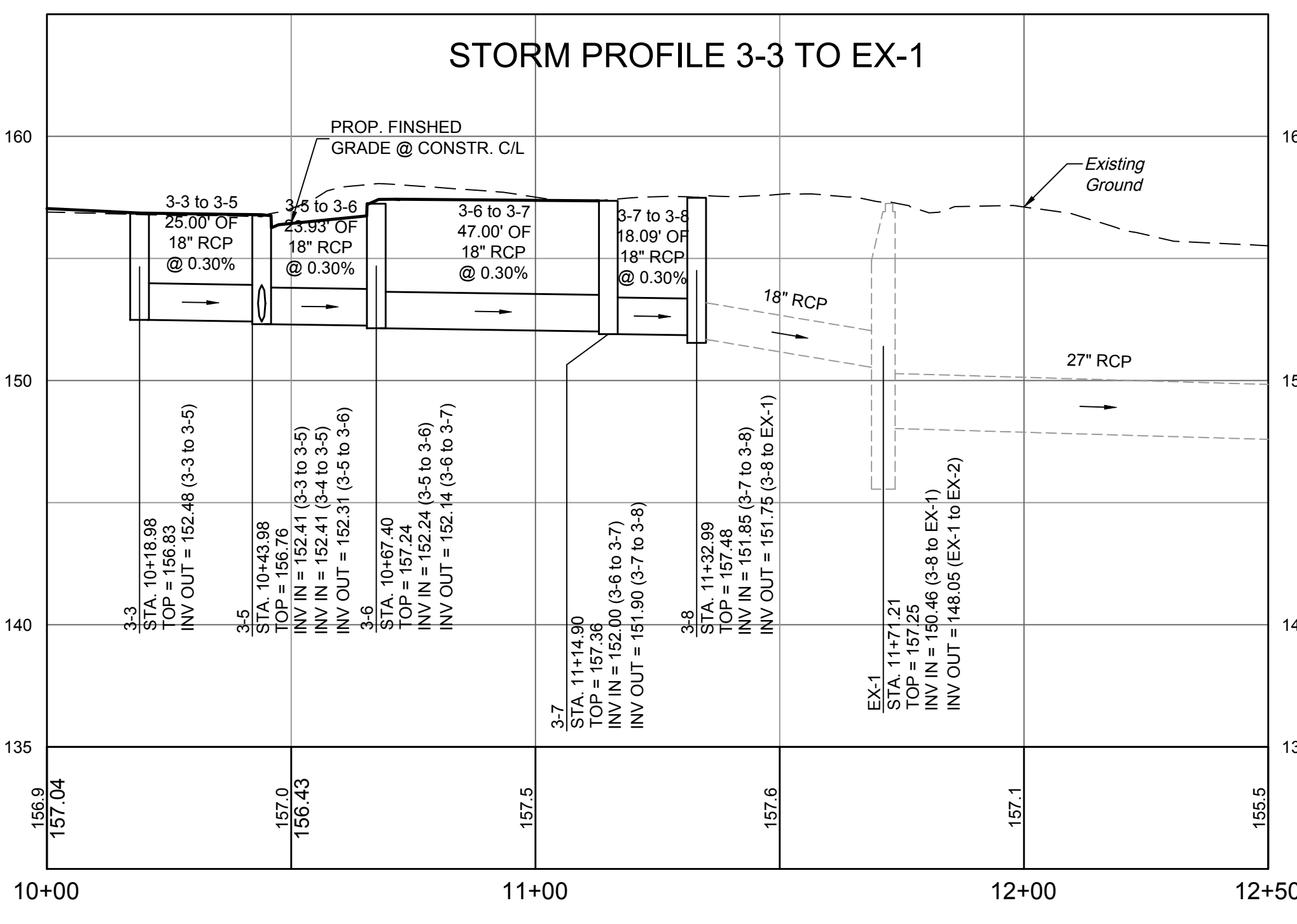
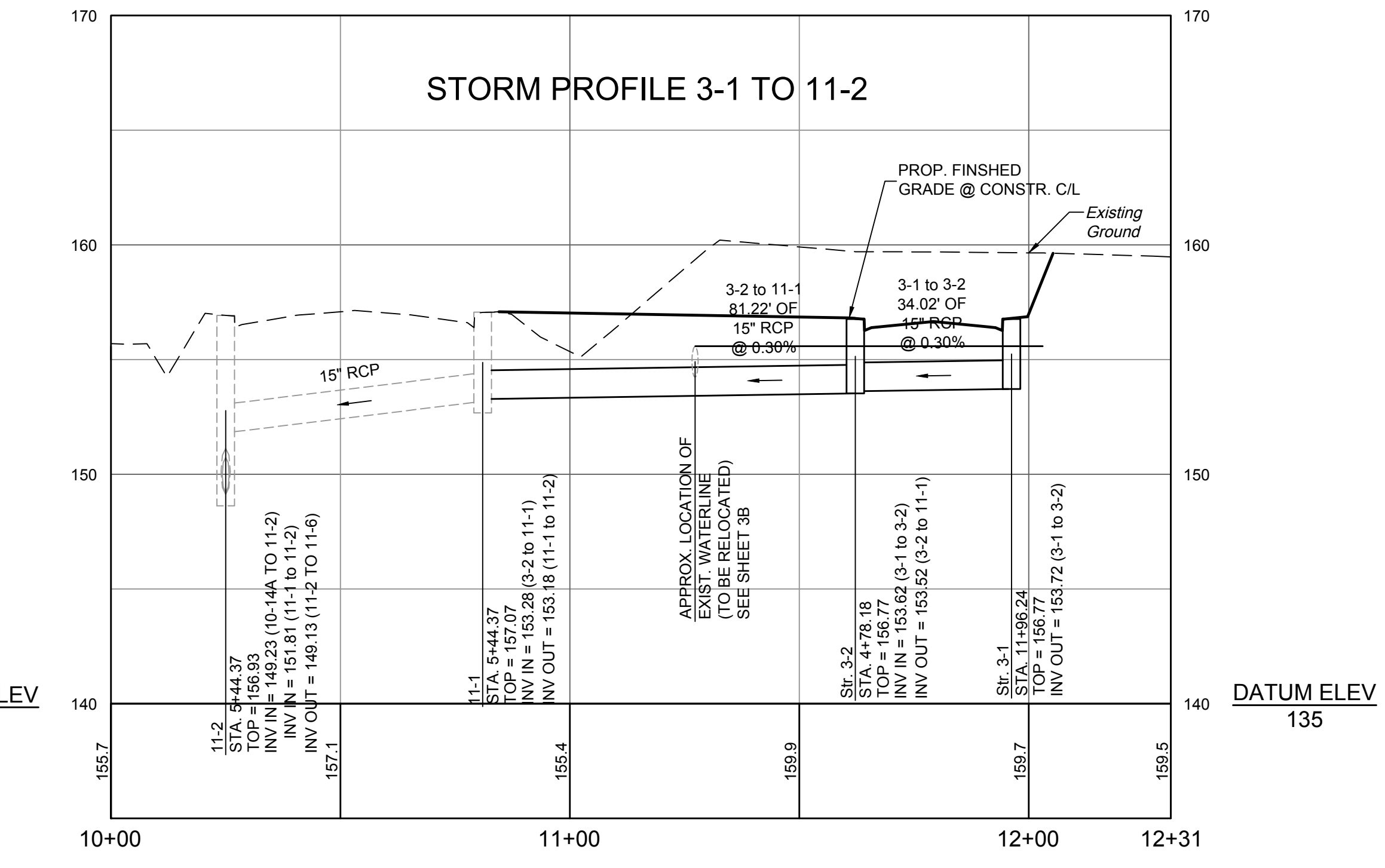
3-2 82' - 15" STORM SEWER PIPE REQ'D.
INV.(IN) = 153.52', INV.(OUT) = 153.18'
COVER = 2' & VAR.

3-4 STD. DI-7 REQ'D. (GRATE TYPE A I)
INV. = 152.44', H = 3.09'
CONTRACTOR TO GRADE SWALE AS
REQUIRED TO DIRECT DRAINAGE INTO INLET

3-6 47' - 18" STORM SEWER PIPE REQ'D.
INV.(IN) = 152.14', INV.(OUT) = 152.00'
COVER = 3.5' & VAR.

3-9 10' - 15" STORM SEWER PIPE REQ'D.
INV.(IN) = 154.00', INV.(OUT) = 152.86'
COVER = 0.5' & VAR.

EX-5 TIE PROPOSED PIPE 4-2/EX-5 INTO EXISTING MANHOLE



DATE	REVISION DESCRIPTION
6/30/2019	

TIMMONS GROUP

Site Development | Residential | Infrastructure | Technology

EAST RAMP 3 ACCESS ROAD
HENRICO COUNTY - VIRGINIA

STORM SEWER PROFILES AND DRAINAGE DESCRIPTIONS

YOUR VISION ACHIEVED THROUGH OURS.

THIS DRAWING PREPARED AT THE
CORPORATE OFFICE
1001 Boulevard Parkway, Suite 300, Richmond, VA 23225
TEL 804.200.6500 FAX 804.560.1016 www.timmons.com

DATE: 6/30/2019
DRAWN BY: KPO
DESIGNED BY: KPO
CHECKED BY: CMK
SCALE: 1" = 25'

JOB NO. 40930.001
SHEET NO. 05A

I:\2019\0930-REC_Alpert001_205-DOM_Access_Road\DWG\Sheet\CD\40930.001_205C.dwg | Plotted on 6/20/2019 11:37 AM | by Kevin O'Meara